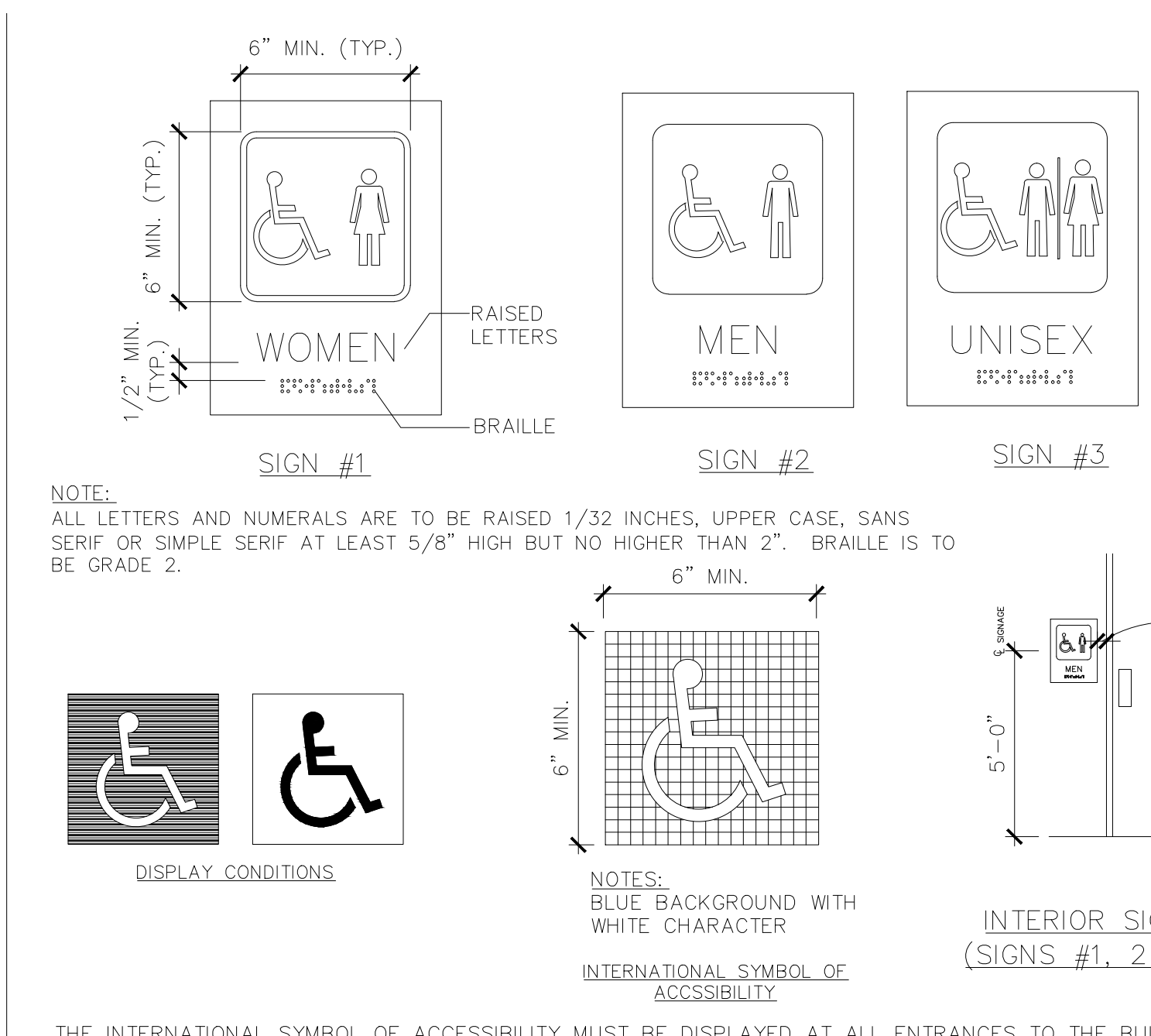
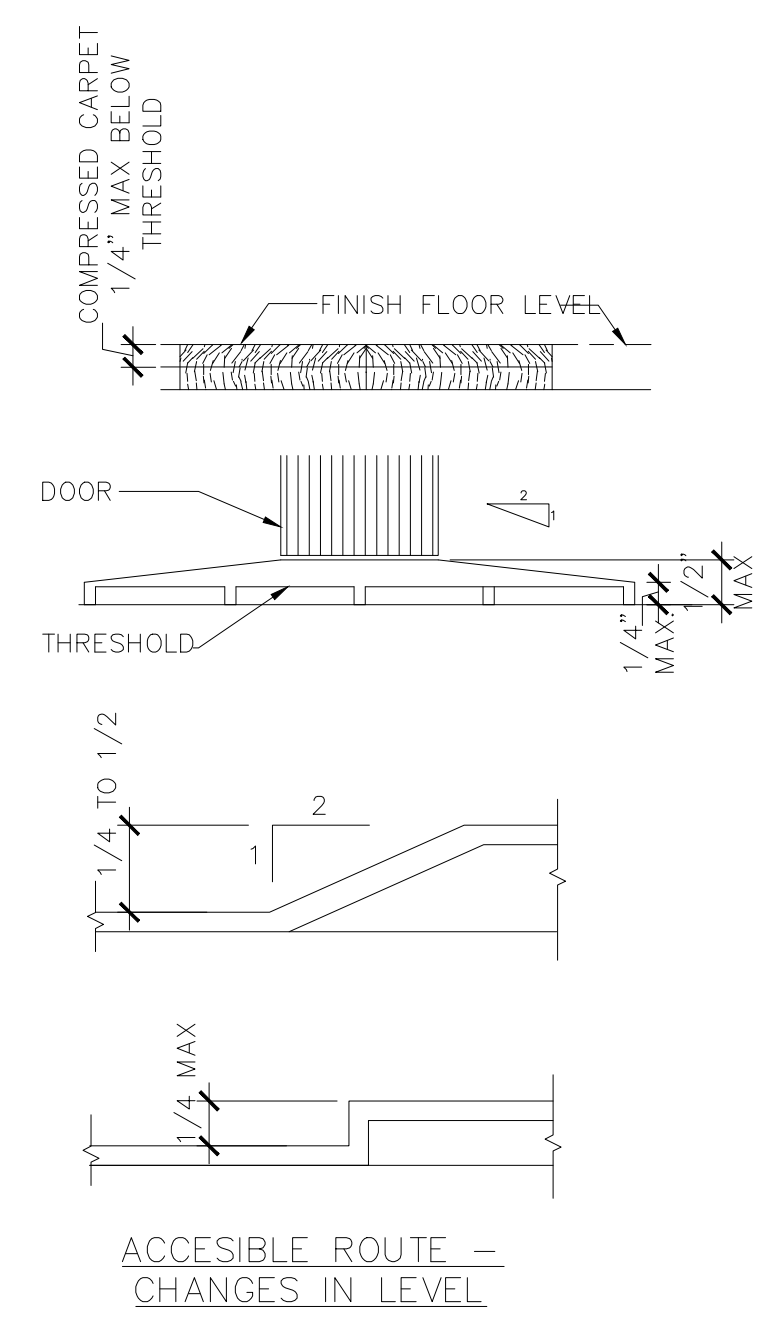
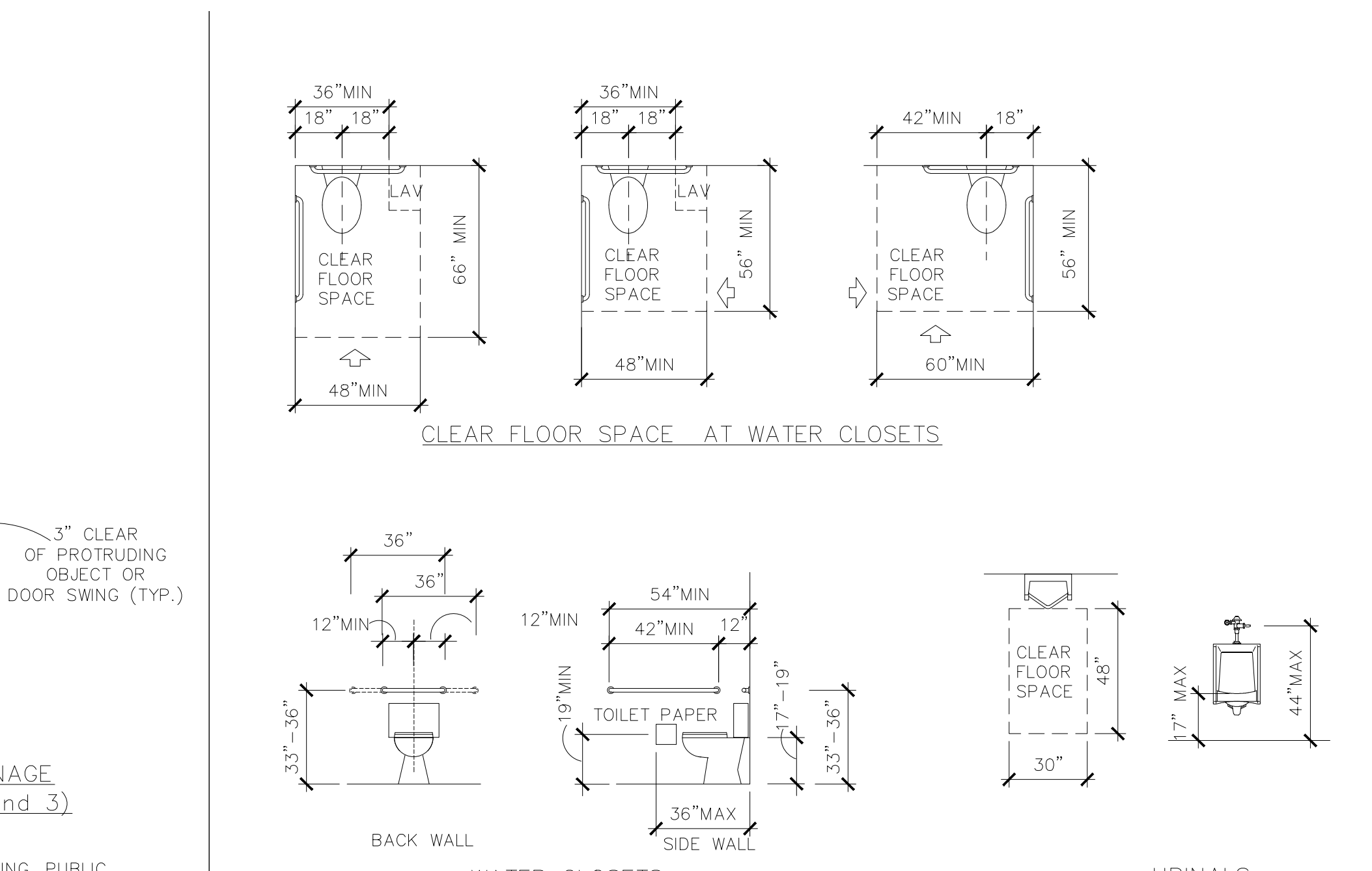


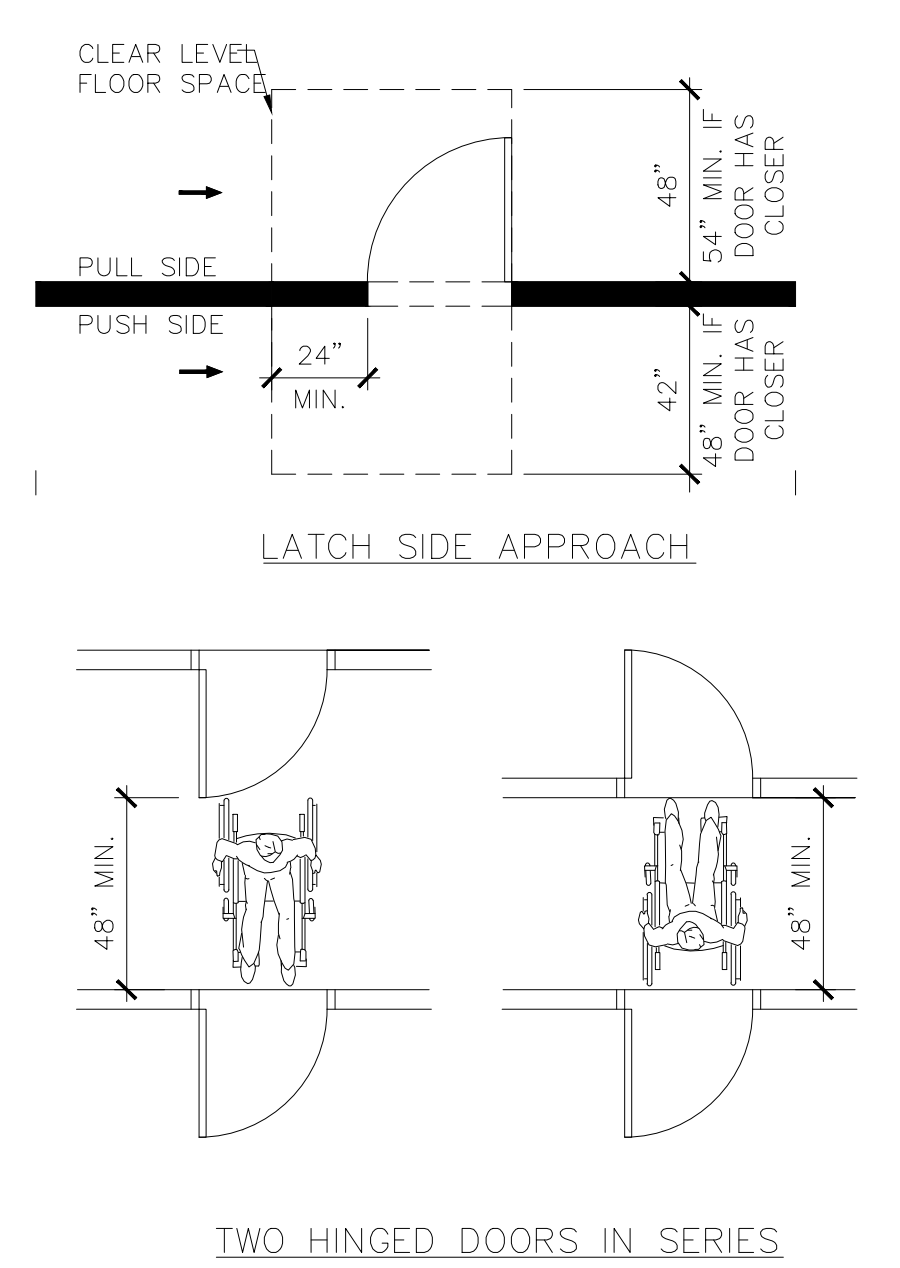
2 ACCESSIBLE ROUTE
1/4"=1'-0"



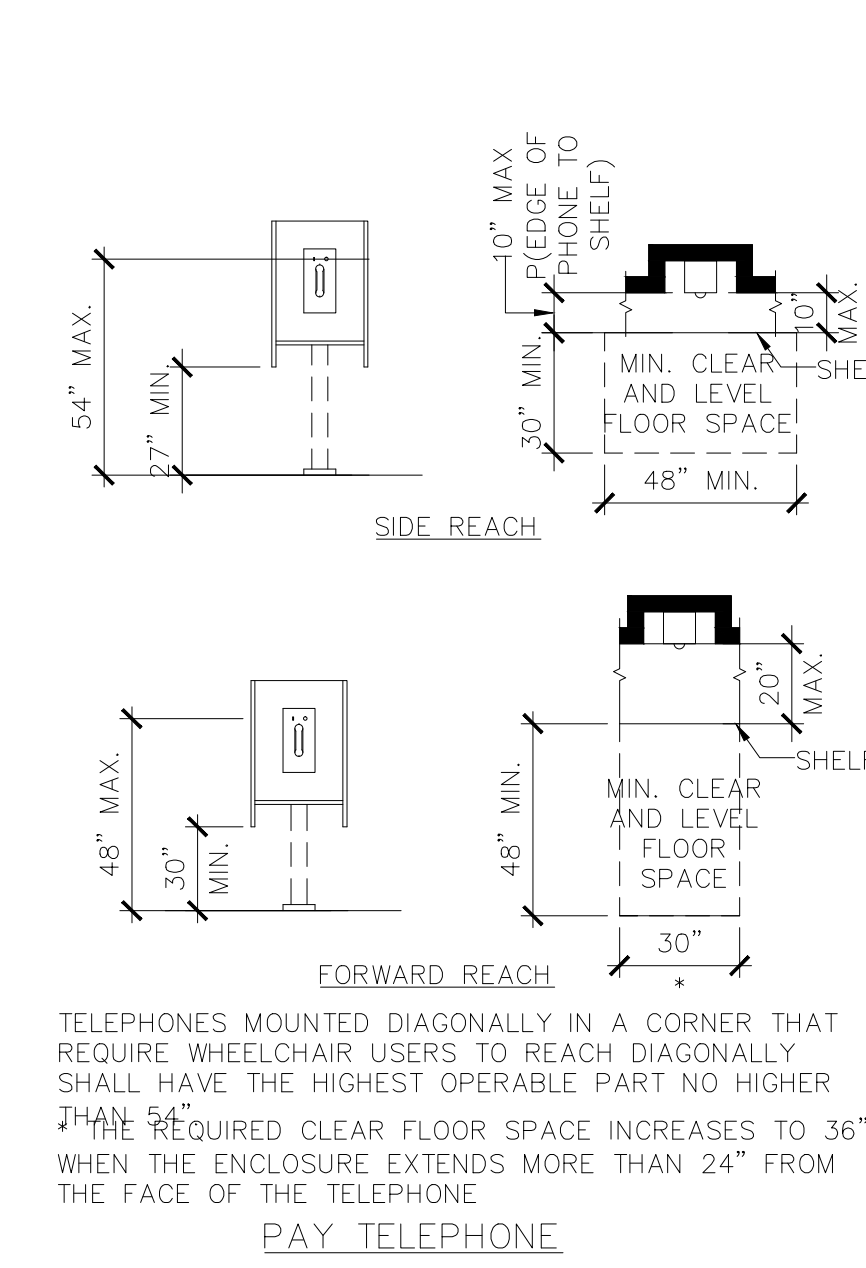
3 INTERIOR ACCESSIBLE SYMBOLS
1/4"=1'-0"



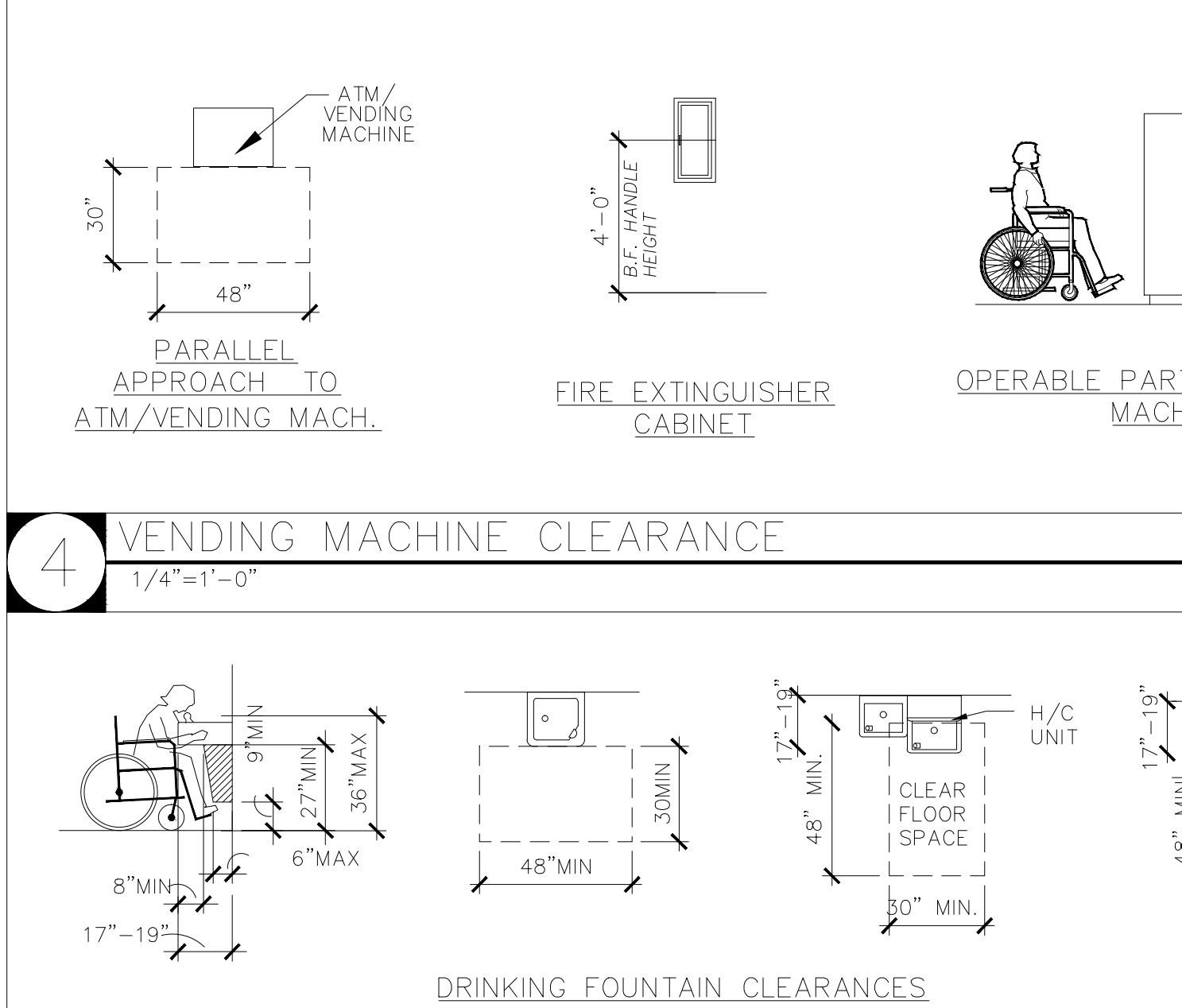
9 WATER CLOSET & URINALS CLEARANCE
1/4"=1'-0"



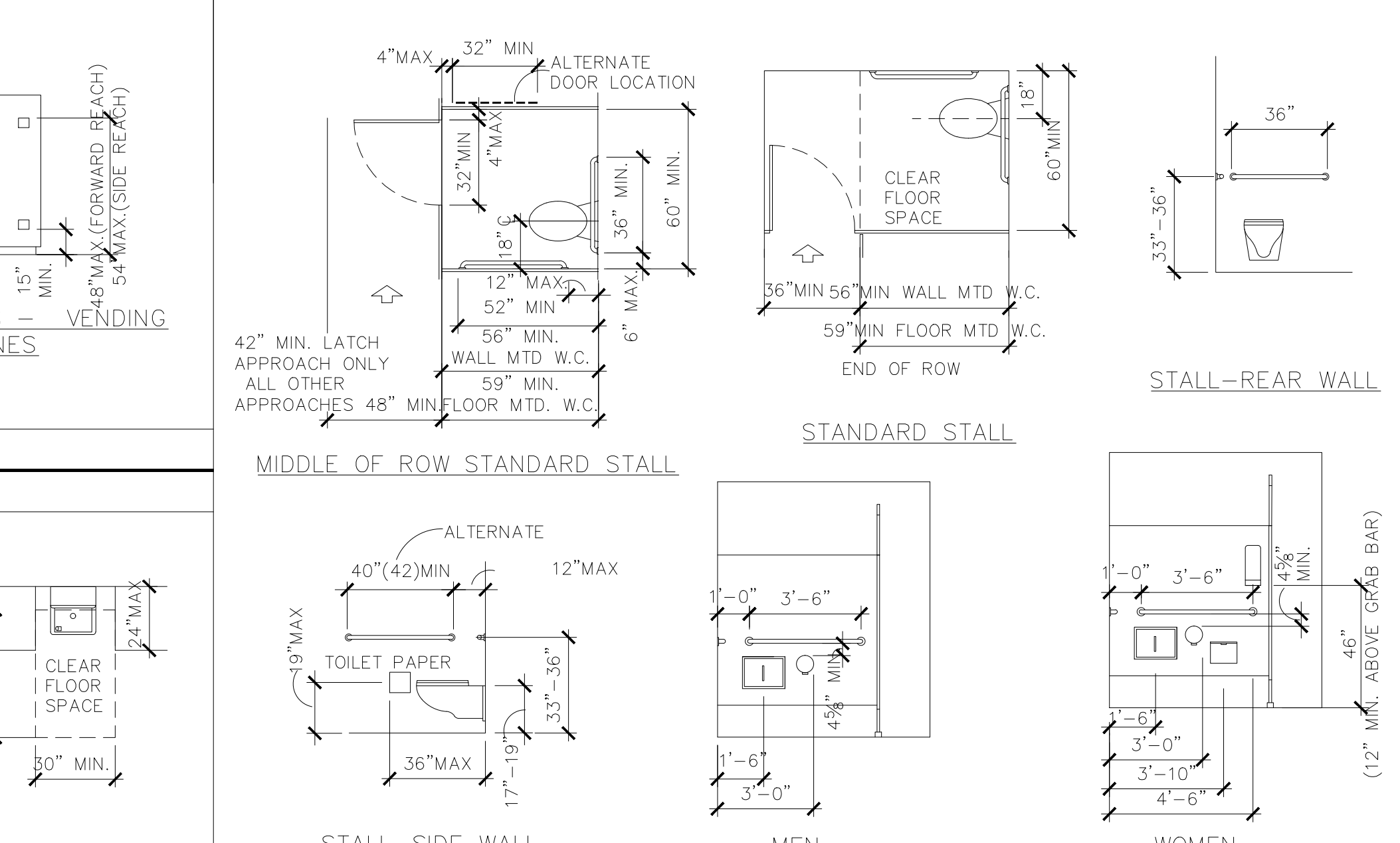
1 DOOR CLEARANCE
1/4"=1'-0"



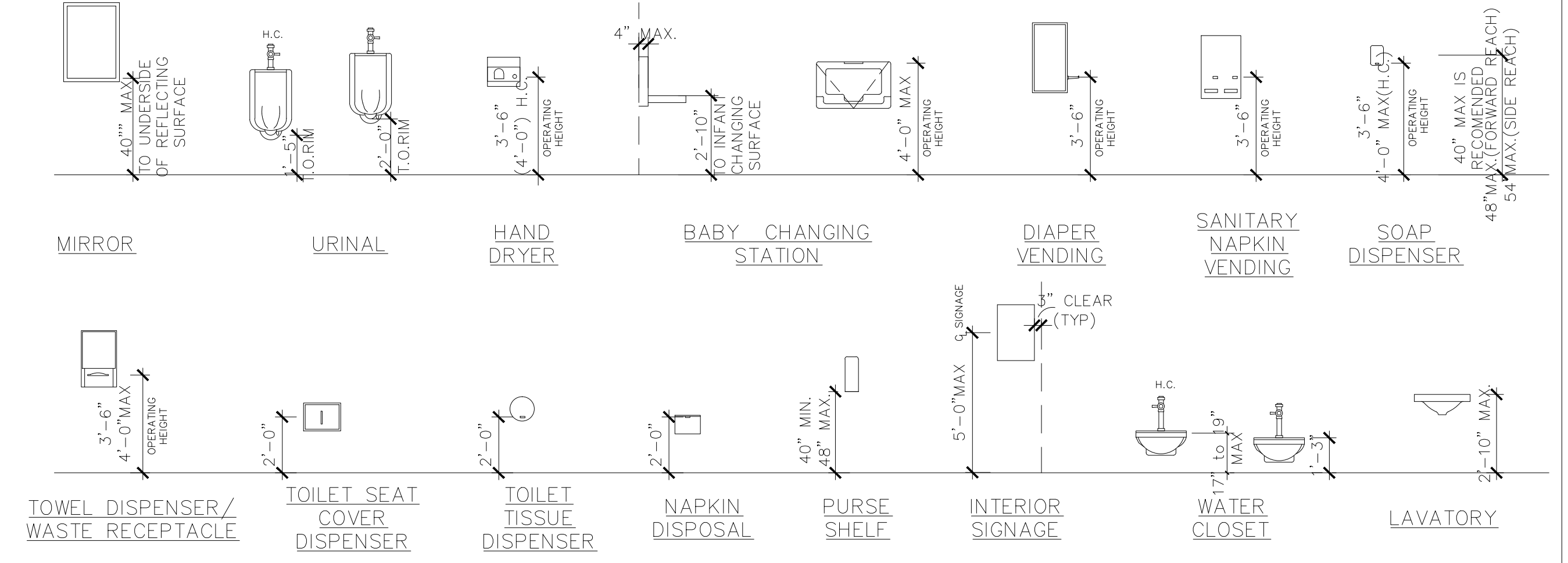
5 TELEPHONE CLEARANCE
1/4"=1'-0"



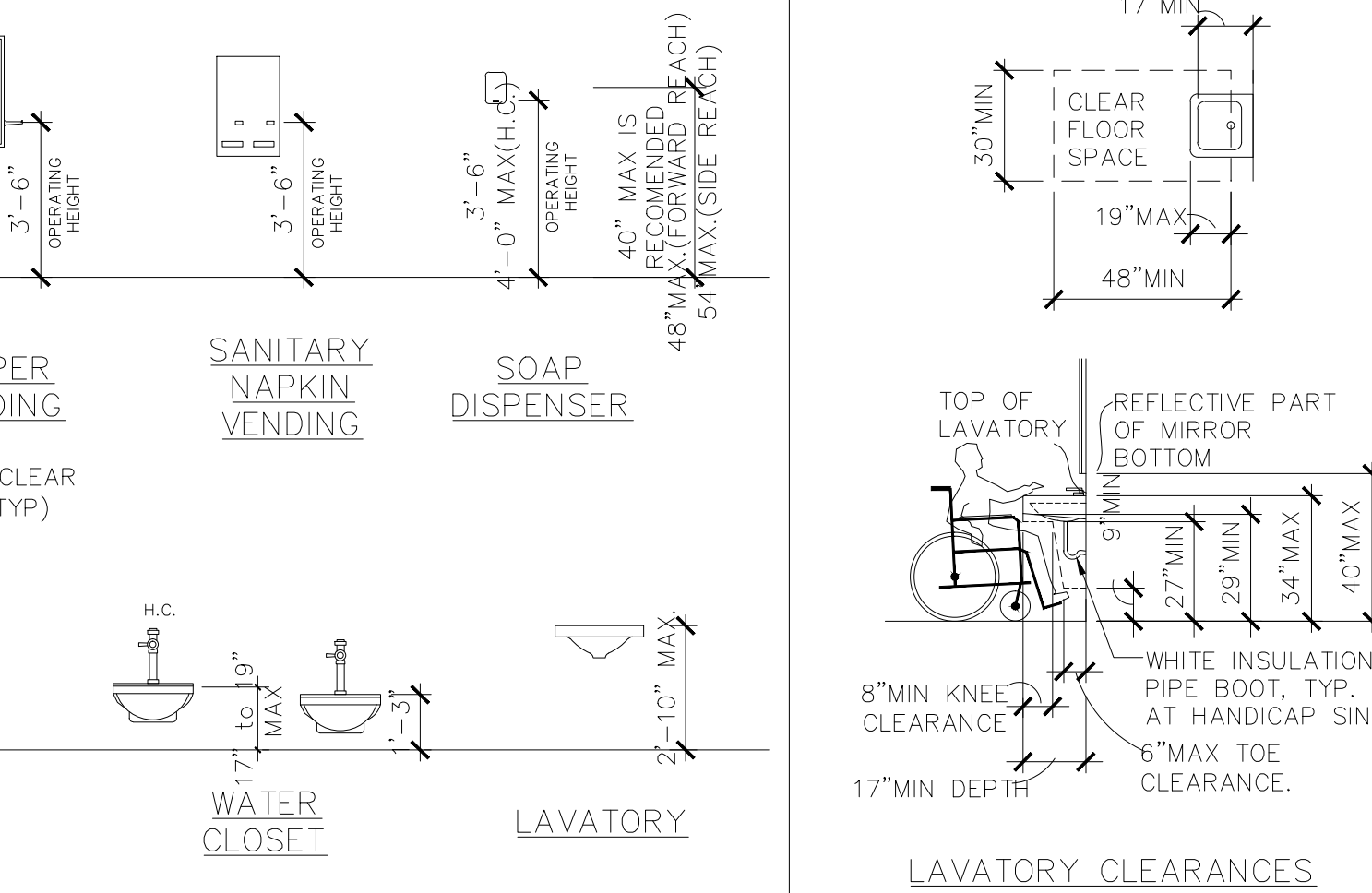
6 DRINKING FOUNTAIN CLEARANCE
1/4"=1'-0"



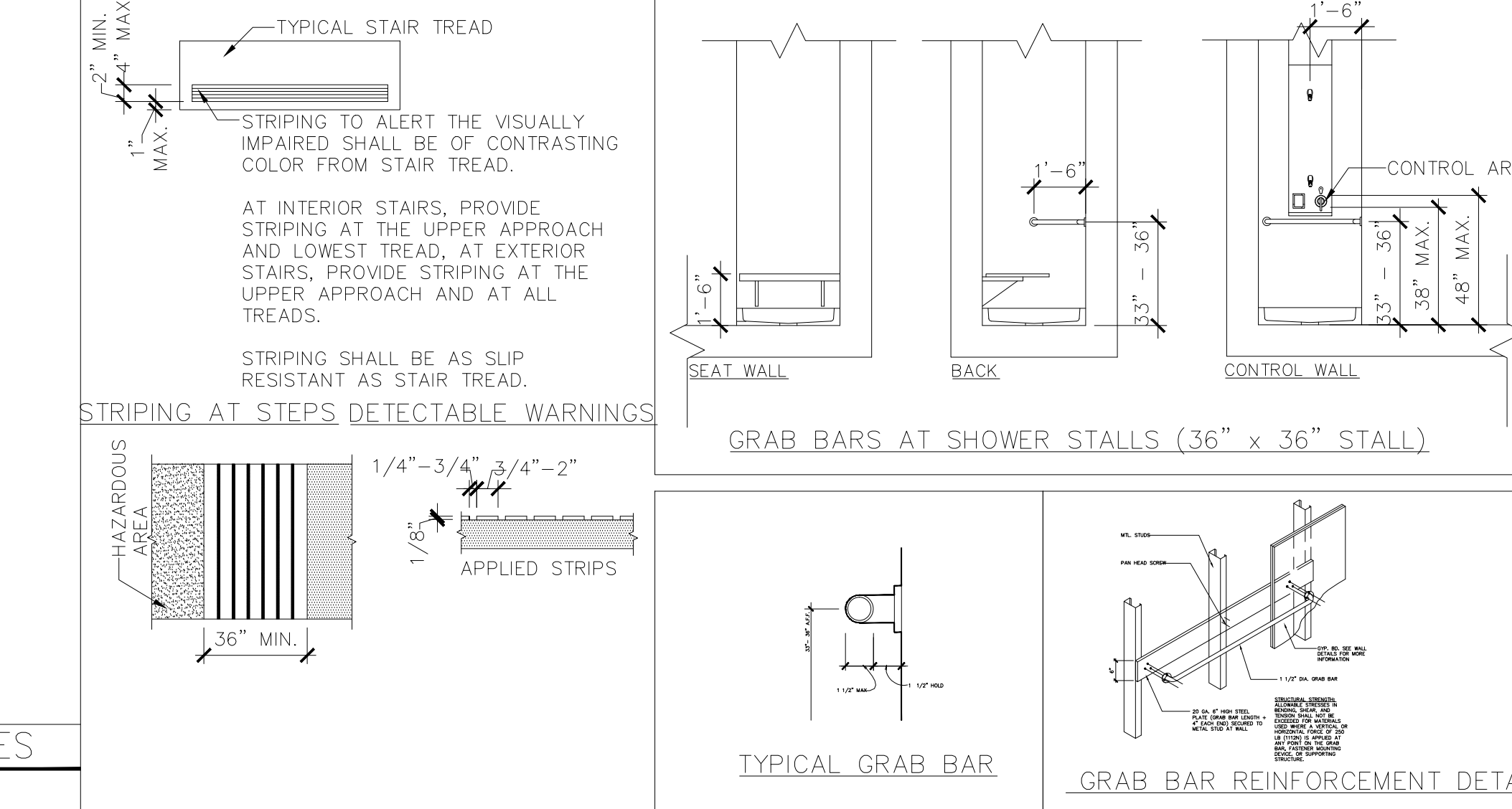
10 TOILET STALL CLEARANCE
1/4"=1'-0"



7 MAXIMUM REACH HEIGHTS (TYPICAL MOUNTING HEIGHTS)
1/4"=1'-0"



8 LAVATORY CLEARANCES
1/4"=1'-0"



10 TOILET STALL CLEARANCE
1/4"=1'-0"

DESIGN FIRM: **Ndengu Design, LLC.**
1 Avenue C - Suite 100
Hudson City, Bayonne County,
New Jersey 07002-3620
T: (908) 688-6440
F: (908) 688-6440
E: info@ndengudesign.com
W: ndengudesign.com

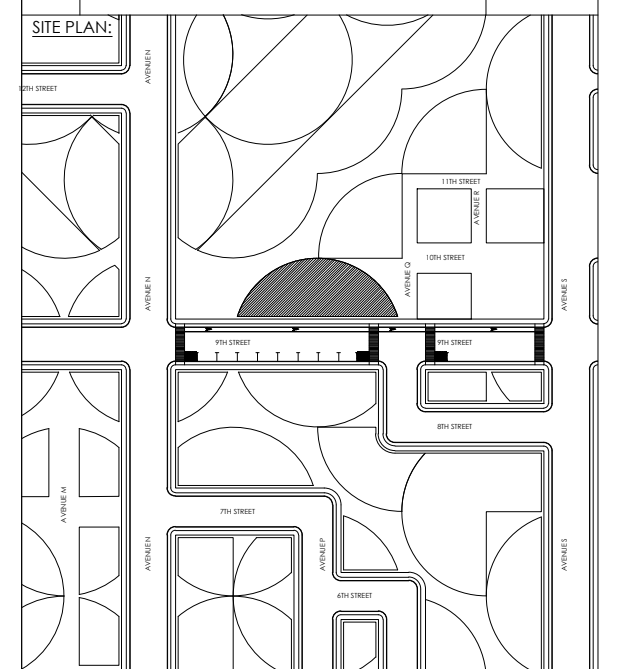
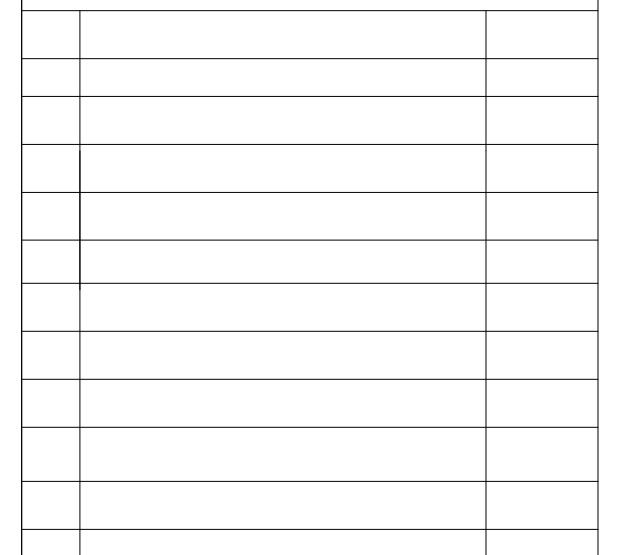
CLIENT: **Buyachi Ndengu Properties, LLC.**
1 Avenue C - Suite 600
Hudson City, Bayonne County,
New Jersey 07002-3620
T: (908) 688-6440
F: (908) 688-6440
E: info@ndengucorp.com
W: ndengucorp.com

PROJECT: **Crossing Coffee & Tea House**
1010 9th Street
Hudson Crossing
Hudson City, Bayonne County,
New Jersey 07002-3620

CONSULTANT:

CONSULTANT:

Notice:
Do not scale drawings.
Contractor is responsible for
verifying dimensions and
details in the field. Report any
discrepancies.



Scale: Drawn By: BN

Date: 00/00/00 Checked By:
ADA DRAWING STANDARDS

Project No.
12002.00
DWG File Name
G000.03
G000.03
Sheet 0 of Sheets
Copyright © 2000 by Ndengu Design
All Rights Reserved